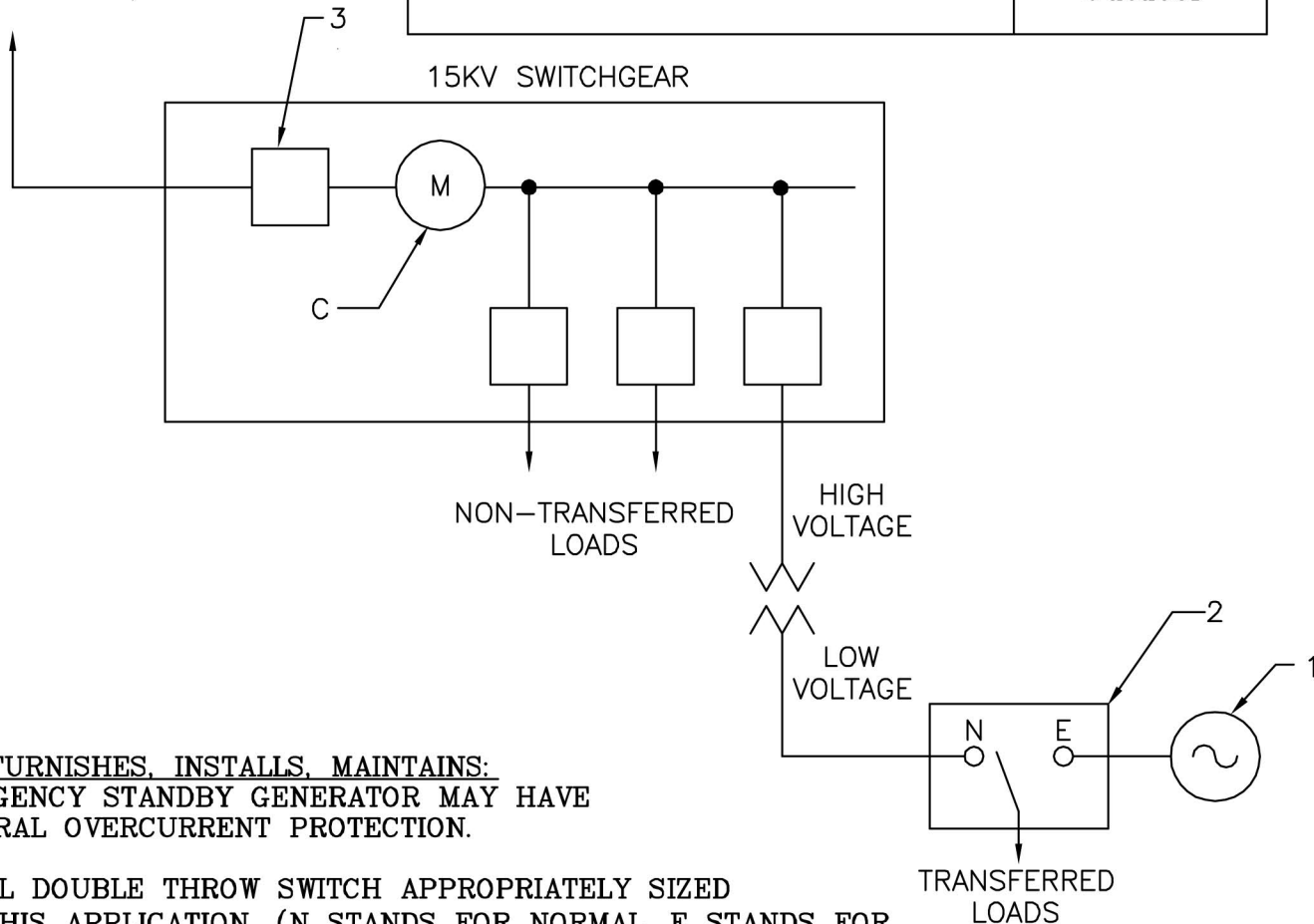


VOLTAGE: 3 Phase, 4 Wire WYE 7,200/12,470V	SERVICE TYPE: Overhead Underground
AMPERAGE: 11 MVA Maximum	METER BASE LOCATION: Indoor Outdoor

PPL EU SERVICE
(12KV NOMINAL)



CUSTOMER FURNISHES, INSTALLS, MAINTAINS:

1. EMERGENCY STANDBY GENERATOR MAY HAVE INTEGRAL OVERCURRENT PROTECTION.
2. MANUAL DOUBLE THROW SWITCH APPROPRIATELY SIZED FOR THIS APPLICATION. (N STANDS FOR NORMAL, E STANDS FOR EMERGENCY).
3. FAULT INTERRUPTING DEVICE CAN BE CIRCUIT BREAKER OR FUSE.

NOTES:

- A. INDEPENDENT ELECTRICAL INSPECTION AND WITNESS OF PERFORMANCE TEST OF MANUAL TRANSFER SWITCH OPERATION RECOMMENDED BY PPL EU AND MAY BE REQUIRED BY THE NATIONAL ELECTRIC CODE OR ANY OTHER APPLICABLE CODE.
- B. PPL EU WILL INSTALL PERMANENT LABELING ON THE METER PANEL (PPL EU CATALOG #1012171) AND PAD MOUNT TRANSFORMER (#1012171) OR POLE MOUNT TRANSFORMER (#1013816) UPON RECEIPT OF INSPECTION.
- C. METERING EQUIPMENT—SEE APPROPRIATE SKETCH FOR SERVICE TYPE AND SIZE TO DETERMINE METERING RESPONSIBILITIES.