

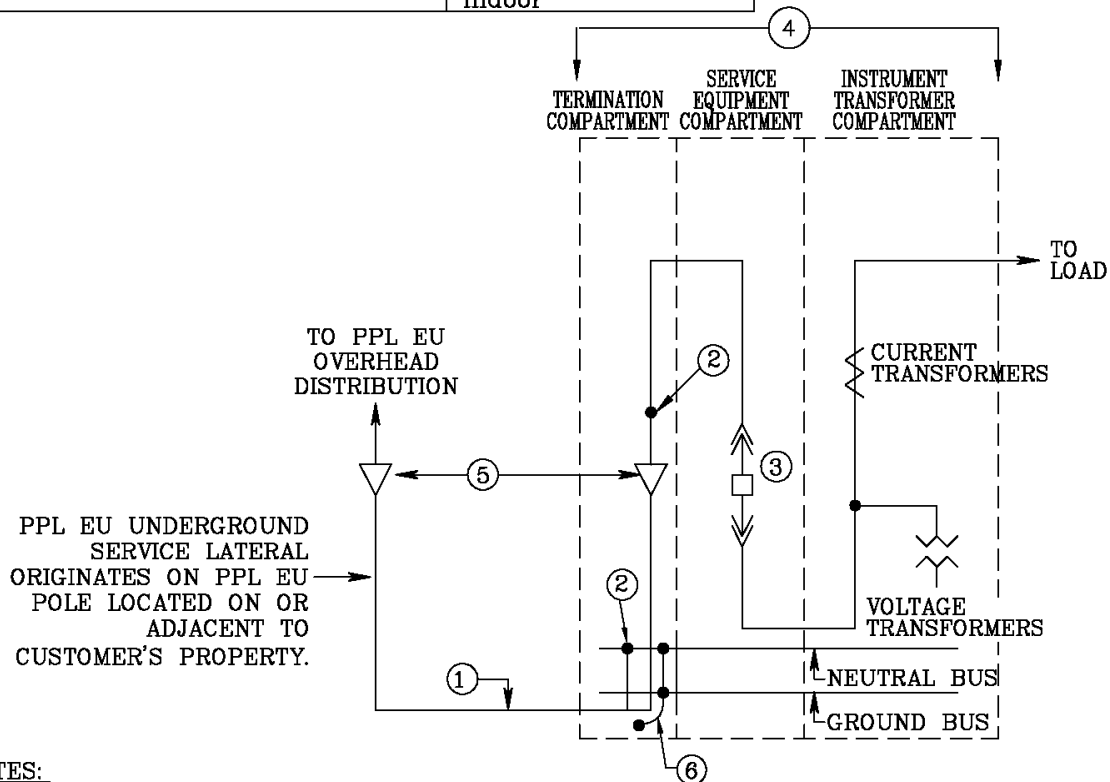


**REMSI Sketches 26-50**  
**Sketch #39**  
**6-51**

0000-000-ST-6051  
 Custom ID: DCS 6-51  
 Revision: 01  
 Effective Date: 09/19/2016  
 Page 29 of 52

**Sketch #39 High voltage service, 3 phase 4 wire one line diagram for typical arrangement of customer's service disconnect and metering instrument transformers in switch gear compartments, 12 kV**

|  |   |
|--|---|
| <b>VOLTAGE:</b><br>3 Phase, 4 Wire WYE 7,200/12,470V | <b>SERVICE TYPE:</b><br>Underground           |
| <b>CUSTOMER LOAD:</b><br>4 MVA Maximum               | <b>METERING EQUIPMENT LOCATION:</b><br>Indoor |



**NOTES:**

1. UNDERGROUND SERVICE LATERAL FROM OVERHEAD DISTRIBUTION BY PPL EU. SEE REMSI RULE 8.
2. POINT OF DELIVERY (TERMINAL CONNECTORS BY CUSTOMER AS SPECIFIED BY PPL EU).
3. HIGH VOLTAGE SERVICE EQUIPMENT (EXTERNALLY OPERABLE LOAD INTERRUPTER SWITCH OR CIRCUIT BREAKER). SEE CRS 6-09-199.
4. SUPPLIER SHALL SUBMIT DETAILED CONSTRUCTION DRAWING AND ONE LINE DIAGRAM TO PPL EU FOR APPROVAL BEFORE CONSTRUCTING THE SWITCHGEAR. PPL EU FURNISHES DETAILED ELECTRICAL ARRANGEMENT OF TERMINATION AND METERING COMPARTMENTS. SEE CRS 6-09-199.
5. HIGH VOLTAGE SERVICE LATERAL TERMINATIONS BY PPL EU.
6. POINT OF CONTACT (POC) IS CONTAINED IN THE PPL EU DOCUMENT "POINT OF CONTACT REQUIREMENTS FOR HIGH VOLTAGE CUSTOMER-OWNED FACILITIES 12KV SUPPLY."

|   |   |  |
|---|---|--|
| RULES FOR ELECTRIC METER AND SERVICE INSTALLATIONS<br><b>PPL ELECTRIC UTILITIES CORPORATION</b> | <b>Rules:</b> 8, 18                                 | <small>*REFERENCE CRS 6-09-199<br/>REMSI_S039_R3.dwg</small> |
|   | <b>Date:</b> <u>1/12/16</u> <b>Engr:</b> <u>NAP</u> |  |