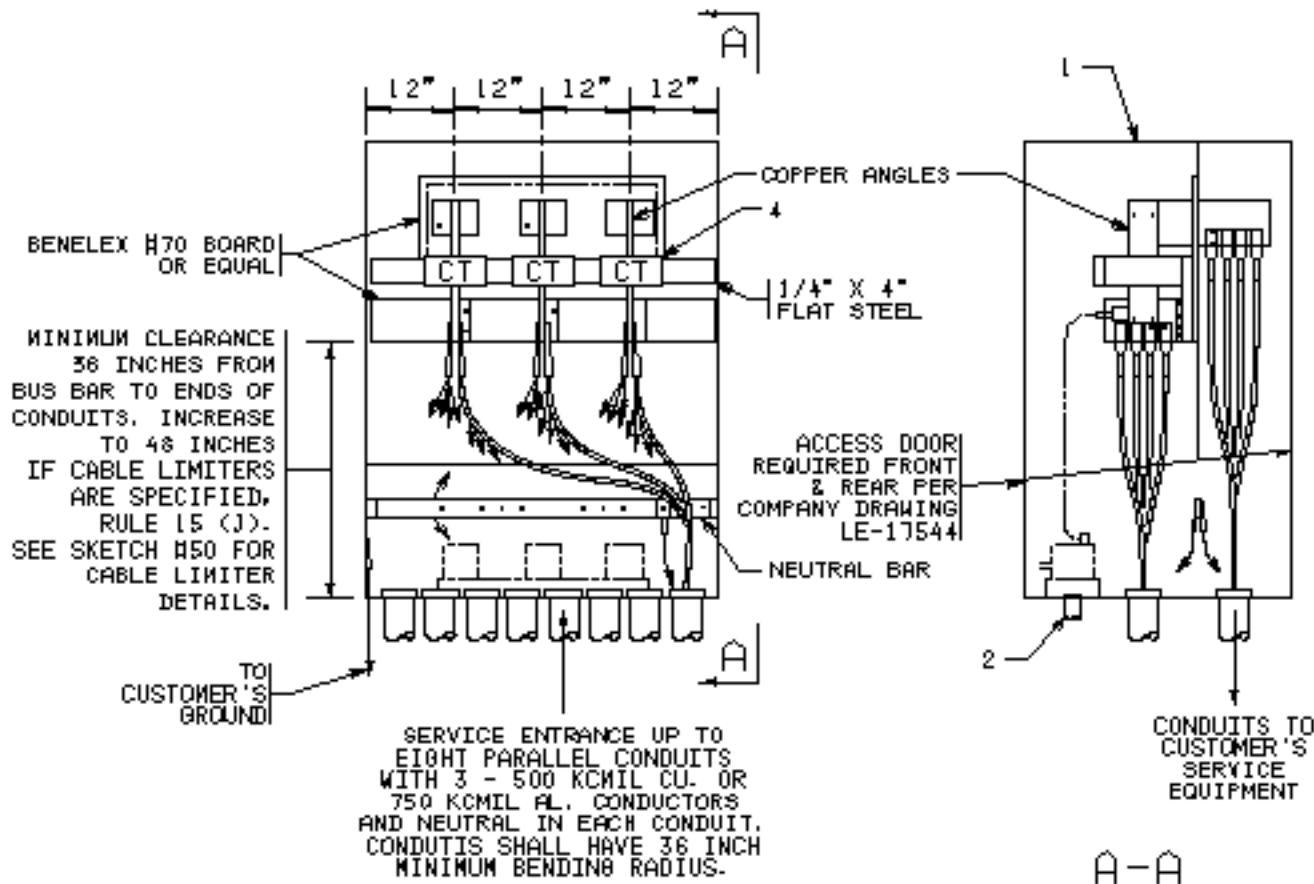


**PENNSYLVANIA POWER & LIGHT COMPANY**  
**SECONDARY SERVICE**  
**TYPICAL ARRANGEMENT OF MOUNTING FOR INSTRUMENT TRANSFORMER**  
**INSTALLATION IN INSTRUMENT TRANSFORMER CABINET FOR PAD MOUNTING**  
**3 PHASE, 4 WIRE, 208Y/120 VOLTS OR 480Y/277 VOLTS -**  
**3000 AMPERE MAXIMUM CAPACITY RATING**  
**FOR SERVICE ENTRANCE CONDUCTORS OF FROM FOUR TO EIGHT**  
**500 KCMIL CU. OR 750 KCMIL AL. CONDUCTORS PER PHASE**  
**RULES 5 AND 15**

APPROVAL OF SUPERVISOR - DIVISION METERING  
 REQUIRED BEFORE INSTALLATION



CUSTOMER FURNISHES, INSTALLS AND MAINTAINS.

- 1 - SEALABLE METAL CABINET, 48 INCHES BY 64 INCHES OR 78 INCHES BY 36 INCHES IF CABLE LIMITERS ARE SPECIFIED, SEE RULE 15 (J).
- 2 - 1-1/4 INCH MINIMUM, THREADED, GALVANIZED, RIGID OR INTERMEDIATE STEEL OR SCHEDULE 40 PVC CONDUIT AND FITTINGS BETWEEN INSTRUMENT TRANSFORMER CABINET AND METER MOUNTING

COMPANY FURNISHES AND MAINTAINS, CUSTOMER INSTALLS:

- 3 - METER MOUNTING
- 4 - INSTRUMENT TRANSFORMERS, MOUNTING DEVICES, FILLER BARS AND LUGS.

COMPANY FURNISHES, INSTALLS AND MAINTAINS:

- 5 - WIRING BETWEEN INSTRUMENT TRANSFORMERS AND METER MOUNTING

REFERENCE:

LE-17542  
 LE-17544

SKETCH # 16A

RULES FOR ELECTRIC METER AND SERVICE INSTALLATIONS  
 PA. POWER & LIGHT CO. ALLENTOWN, PA.

REVISION DATE: 3-1-94

A-191000<sup>-2</sup> SHEET 16A